

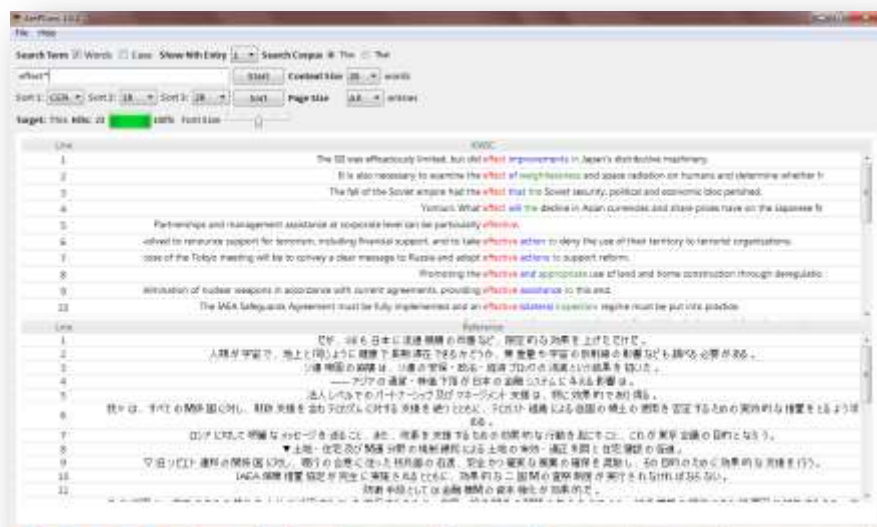


AntPConc (Windows)

Build 1.1.0

Laurence Anthony, Ph.D.

Center for English Language Education in Science and Engineering, School of Science and Engineering, Waseda University, 3-4-1 Okubo, Shinjuku-ku, Tokyo 169-8555, Japan
December 15, 2014



Introduction

AntPConc is a simple freeware parallel corpus analysis. It runs on any computer running Microsoft Windows (tested on Win 98/Me/2000/NT, XP, Vista, Win 7, Win 8). It is developed in Python and Qt using the *PyInstaller* compiler to generate executables for the different operating systems.

Getting Started (No installation necessary)

Windows

On Windows systems, simply double click the *AntPConc* icon to launch the program.

Building a parallel corpus (from two or more aligned raw text files)

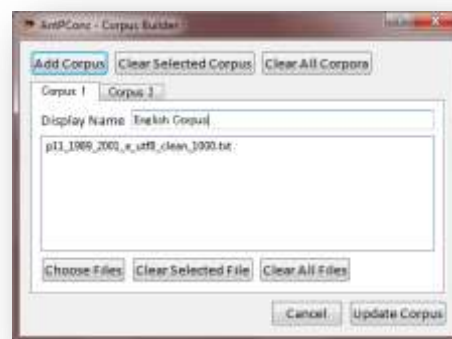
Step 1: Click on the File->Build/Edit menu option. The "Corpus Builder" dialog box will appear.

Step 2: Select "Corpus 1" and load your first raw text file. Each line of this file should be aligned with each line of your other raw text files. (A 'line' is a string of text with a line break at the end.)

Step 3: Click on the "Display Name" entry box, and give your first corpus an appropriate name (e.g. English Corpus, Target Corpus, etc.)

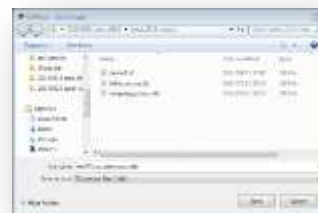
Step 4: Click on "Corpus 2" and repeat steps 2 and 3

Step 5: Click 'Update Corpus' to build an internal database of the parallel corpus that you have built.



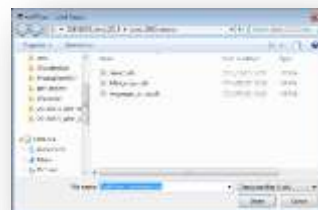
Saving an already built parallel corpus

- Step 1:** Complete the steps 1 to 5 from the "building a parallel corpus" explanation above to build your corpus from a set of raw files.
- Step 2:** Click on the File->Save Corpus menu option. Follow the Save Dialog instructions and save your built corpus using the .db extension.



Loading an already built a parallel corpus

- Step 1:** Complete the steps 1 and 2 from the "saving an already built parallel corpus" explanation above to save a built corpus from a set of raw files.
- Step 2:** Click on the File->Load Corpus menu option. Follow the Load Corpus Dialog instructions and load your corpus into AntPConc. The parallel corpus will be loaded into the system and the names you gave to the different parts of the parallel corpus will be shown as radiobuttons next to the "Search Corpus" label. Clicking on one of the radiobuttons will activate that part of the parallel corpus for searching.



Editing an already built a parallel corpus

- Step 1:** Click on the File->Load Corpus menu option. Follow the Load Corpus Dialog instructions and load your corpus into AntPConc.
- Step 2:** Click on the File->Build/Edit menu option. The "Corpus Builder" dialog box will appear (see above).
- Step 3:** Add or delete parts of the parallel corpus as necessary. Also, if you want to change the name of the corpus parts, you can do this here.

Searching a parallel corpus

- Step 1:** Build a corpus or load a corpus into AntPConc following the steps above.
- Step 2:** Choose which part of the corpus you want to search in, e.g., English, Target, etc. by clicking on one of the radiobuttons next to the "Search Corpus" label.
- Step 3:** Activate the "Words" checkbox to search for strings of text comprised of Unicode "Letter" class characters delimited by one or more non-Letter characters. Deactivate the "Words" checkbox to search for any string of Unicode "Letter" class characters.
- Step 4:** Choose a 'thinning option' to show all hits (Nth Entry = 1), every fifth hit (Nth Entry = 5) and so on.
- Step 5:** Choose a context size to specify the approximate number of words to the left and right of the search hit that will be shown in the results window.
- Step 5:** Choose a page size option to specify how many results will be shown per page in the results window.
- Step 6:** Determine the sort order of the results, e.g. sorted by the center term first (CEN), then the first word to the right (1R), and then the second word to the right (2R).
- Step 7:** Type your search word or phrase into the search box.
- Step 8:** Click "Start" or hit the RETURN key to generate the results.
- Step 9:** Use the font size adjuster to change the font size of the results.

NOTES

Comments/Suggestions/Bug Fixes

All new editions and bug fixes are listed in the revision history below. However, if you find a bug in the program, or have any suggestions for improving the program, please let me know and I will try to address the issues in a future version.

This software is available as 'freeware' (see Legal Matter below), but it is important for my funding to hear about any successes that people have with the software. Therefore, if you find the software useful, please send me an e-mail briefly describing how it is being used.

CITING/REFERENCING AntPConc

Use the following method to cite/reference *AntPConc* according to the APA style guide:

Anthony, L. (YEAR OF RELEASE). *AntPConc* (Version VERSION NUMBER) [Computer Software]. Tokyo, Japan: Waseda University. Available from <http://www.antlab.sci.waseda.ac.jp/>

For example if you download *AntPConc* 1.1.0 which was released in 2014, you would cite/reference it as follows:

Anthony, L. (2014). *AntPConc* (Version 1.1.0) [Computer Software]. Tokyo, Japan: Waseda University. Available from <http://www.antlab.sci.waseda.ac.jp/>

Note that the APA instructions are not entirely clear about citing software, and it is debatable whether or not the "Available from ..." statement is needed. See here for more details:

<http://owl.english.purdue.edu/owl/resource/560/10/>

LEGAL MATTER

AntPConc can be used freely for individual use for non-profit research purposes, and freely distributed on the condition that this read me file is attached in an unaltered state. If the software is planned to be used in a group environment, you are required to inform me how the software is to be used, and I will then determine if you can have permission to use it. The software comes on an 'as is' basis, and the author will accept no liability for any damage that may result from using the software.

KNOWN ISSUES

None at present.

REVISION HISTORY

1.1.0

A minor update that adds this help file to the menu of AntPConc and also fixes a bug that caused the search words and sorted words to not be highlighted in the results display. This bug was introduced in version 1.0.3 as a result of adding Unicode 'marks' to the token definition.

1.0.3

A minor update adding Unicode 'marks' to the internal token definition to handle some specific non-English diacritics.

1.0.2

A minor update to correct a few rendering issues in the interface.

1.0.0

This is the first version of the program

Copyright: Laurence Anthony 2014